



WELCOME TO LUCKNAM PARK

Country house living at its very best

Lucknam Park is a magnificent Palladian mansion dating from 1720. Maintained as a family home until 1987, it then opened its doors as one of the UK's top country house hotels. Set in 500 acres of listed parkland and beautiful gardens, Lucknam Park has been lovingly restored to the elegance and style of the past era.

The distinguished hotel was awarded three Michelin Guide Keys in 2024, and boasts 42 individually styled rooms and suites, 9 stunning luxury cottages, Michelin-star dining, an award-winning Spa, Equestrian Centre, The Hideaway, outdoor play area with musical instruments, Activity Pod and much more.

Lucknam Park is truly one of England's finest hotels, providing 5-star luxury at every turn.



THE COACH HOUSE
BY LUCKNAM PARK



LUXURY COTTAGES

Your very own private haven

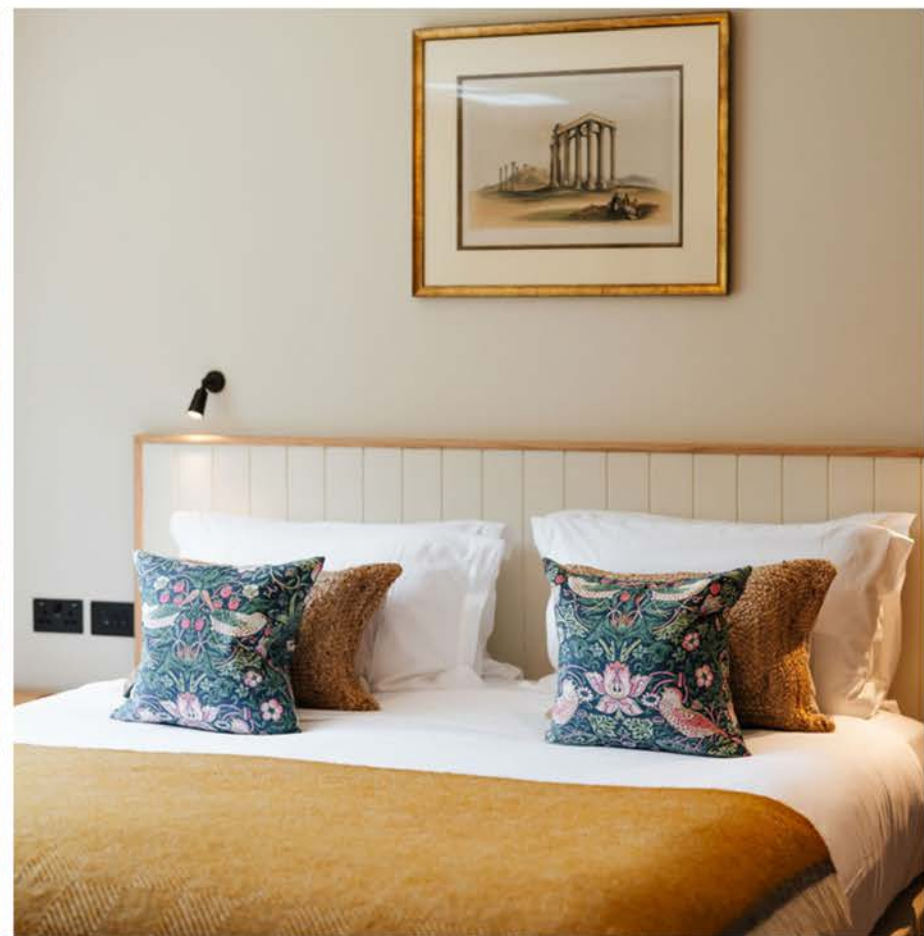
Each of our 9 cottages are individually curated using a classic, country chic design with luxurious touches throughout, combining style, comfort and relaxation to create a homely feeling.

Our stone-built cottages have been designed with sumptuous interiors and beautifully manicured gardens, offering a secluded escape to the countryside.

Each cottage has its own fully fitted kitchen with all the facilities required to produce the perfect family feast, cosy living rooms with wood-burning stoves, bedrooms with sweeping views, and bathrooms that echo pure splendour - finished using the finest marble.

Our cottage collection offers 3 categories, with the Country cottages being the standard, cosy range. Our Manor cottages are slightly larger with more room to relax, and our Grand cottages are the largest in size with a more modern finish.





KEEPER'S COTTAGE

Country Cottage (3-bed)

This pretty stone cottage is situated near to the Equestrian Centre, just a short walk from the hotel. The interiors offer a quintessential British design perfect for families and small groups. Keeper's Cottage sleeps a maximum of 6 guests and 1 additional infant cot.

Description:

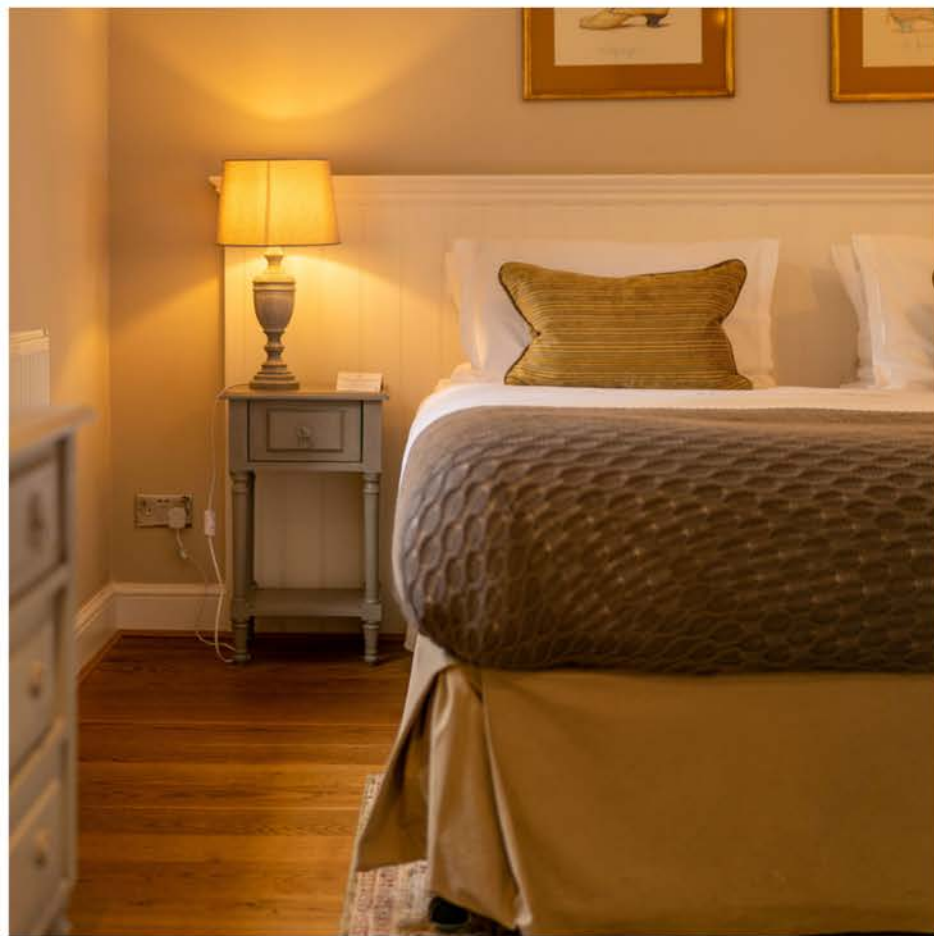
- 1 first floor double bedroom with ensuite shower
- 1 ground floor twin bedroom with ensuite shower
- 1 ground floor double/twin bedroom with ensuite bath and shower
- Hand-built country kitchen with range cooker
- Dining room
- Upstairs living room with wood-burning stove
- Enclosed small garden and terrace

Amenities:

- Wi-Fi
- TV in living room and all bedrooms
- Dedicated parking
- Dog-friendly (maximum of 2 medium dogs)







THATCHER'S COTTAGE

Country Cottage (3-bed)

Thatcher's Cottage is a quaint stone cottage situated near the Equestrian Centre, just a short walk from the hotel. Perfect for families and small groups, it sleeps 6 guests with room for 1 additional infant cot.

Description:

- 1 ground floor double bedroom with ensuite shower
- 1 first floor twin bedroom with ensuite shower
- 1 first floor double bedroom with ensuite bath and shower
- Modern country kitchen with range cooker
- Open-plan kitchen and dining room with wood-burning stove
- Conservatory
- Enclosed garden and terrace

Amenities:

- Wi-Fi
- TV in kitchen, conservatory and each bedroom
- Dedicated parking
- Dog-friendly (maximum of 2 medium dogs)







GATE HOUSE

Manor Cottage (1-bed)

This striking stone-built cottage has all the historic features one would expect from a Gate House. With a cosy, writer's cottage feel, this 1-bed sanctuary offers the perfect getaway for 2 guests.

Description:

- Sleeps up to 2 adult guests (no children permitted)
- 1 double bedroom
- Country kitchen with modern oven
- Dining room
- Good size enclosed garden and terrace

Amenities:

- Wi-Fi
- TV in living room and bedroom
- Dedicated parking
- Dog friendly (maximum of 2, medium size)







PADDOCK VIEW

Manor Cottage (3-bed)

Located near the Equestrian Centre, this stone-built 3-bed cottage has sweeping views of the fields beyond its manicured garden. Sleeping up to 6 guests plus 1 additional infant cot, this cottage makes the perfect accommodation for a family, group of friends, or work stay.

Description:

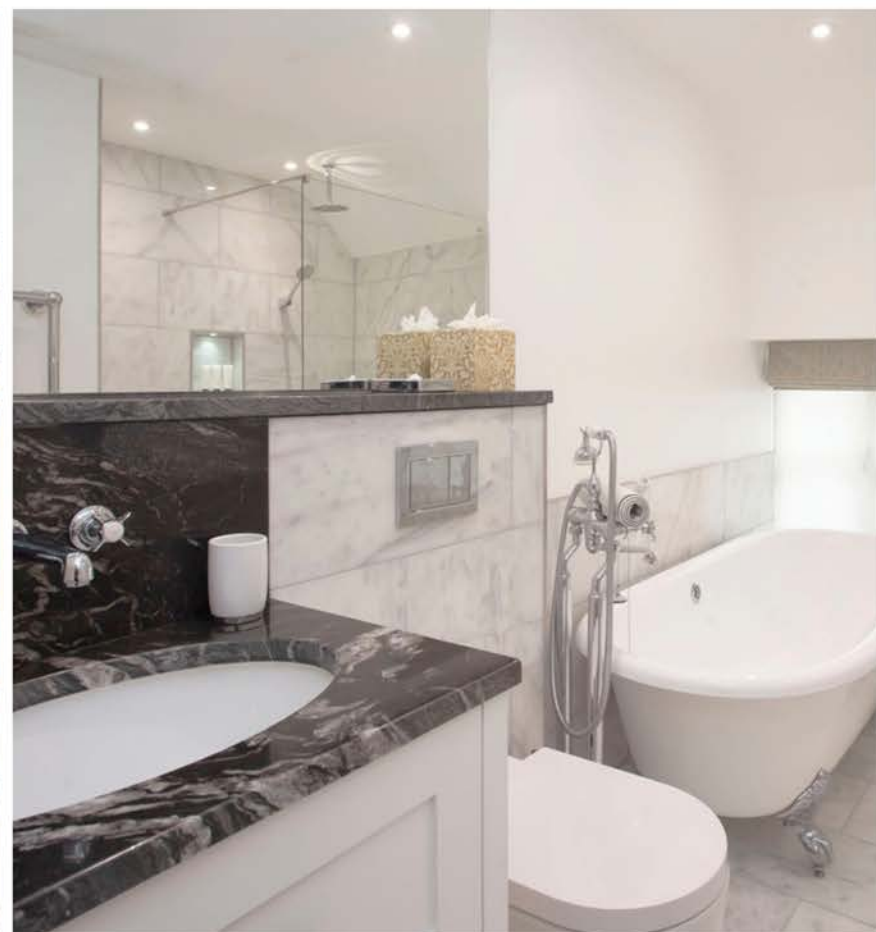
- 2 first floor double rooms with ensuite shower
- 1 first floor twin room with ensuite shower and bath
- Modern country kitchen with range cooker
- Open-plan kitchen and dining room
- Sitting room with large patio doors and wood-burning stove
- Large private garden with terrace

Amenities:

- Wi-Fi
- TV in kitchen diner and bedrooms
- Dedicated parking
- Dog friendly (maximum of 2, medium size)







COACH HOUSE

Manor Cottage (3-bed)

Nestled in a quiet corner near the Equestrian Centre, this 3-bed cottage blends into nature with its stone walls and pale green wooden frames. Sleeping up to 6 guests plus 1 additional infant cot, Coach House makes the perfect accommodation for a family, group of friends, or work stay.

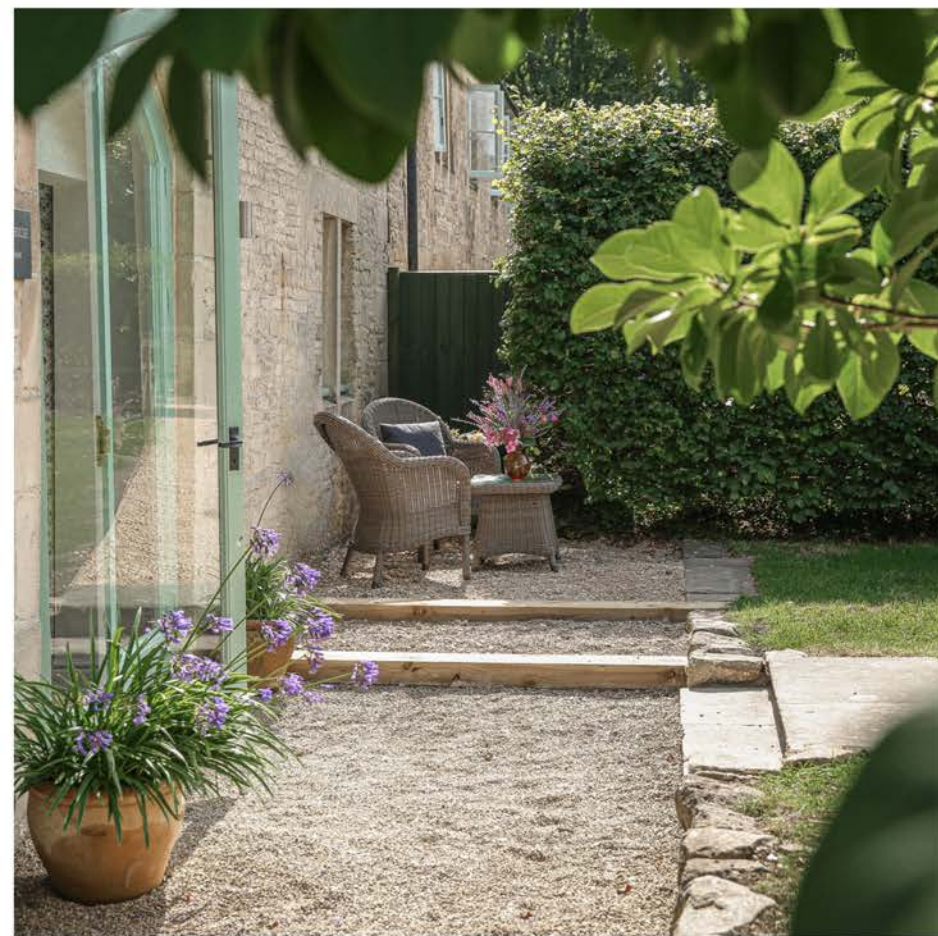
Description:

- 2 first floor double rooms with ensuite shower
- 1 first floor twin room with ensuite shower and bath
- Modern country kitchen with range cooker
- Open plan kitchen and dining room with wood burning stove
- Snug lounge
- Large private garden with terrace

Amenities:

- Wi-Fi
- TV in kitchen diner and bedrooms
- Dedicated parking
- Dog-friendly (maximum of 2, medium size)







APPLE & PEAR TREE COTTAGES

Grand Cottages (2-bed)

This pair of beautiful stone-built cottages sit next to each other in mirror image. They are both designed in a modern, country cottage style and have their own enclosed garden and terrace. These cottages sleep up to 4 guests plus 1 infant cot.

Description:

- 1 double with ensuite and copper bath
- 1 double/twin room with ensuite shower
- Modern country kitchen with range cooker
- Kitchen dining room
- Lounge with wood-burning stove
- Private garden with terrace

Amenities:

- Wi-Fi
- TV in kitchen diner and bedrooms
- Dog-friendly (maximum 2, medium size)
- Dedicated parking







MIDDLE LODGE

Grand Cottage (3-bed)

Middle Lodge is our largest 3-bed stone built cottage with a large manicured gardens to the front and rear. It is located near the Equestrian Centre and is a short walk to the main hotel facilities. This cottage can accommodate 6 guests and 1 infant cot.

Description:

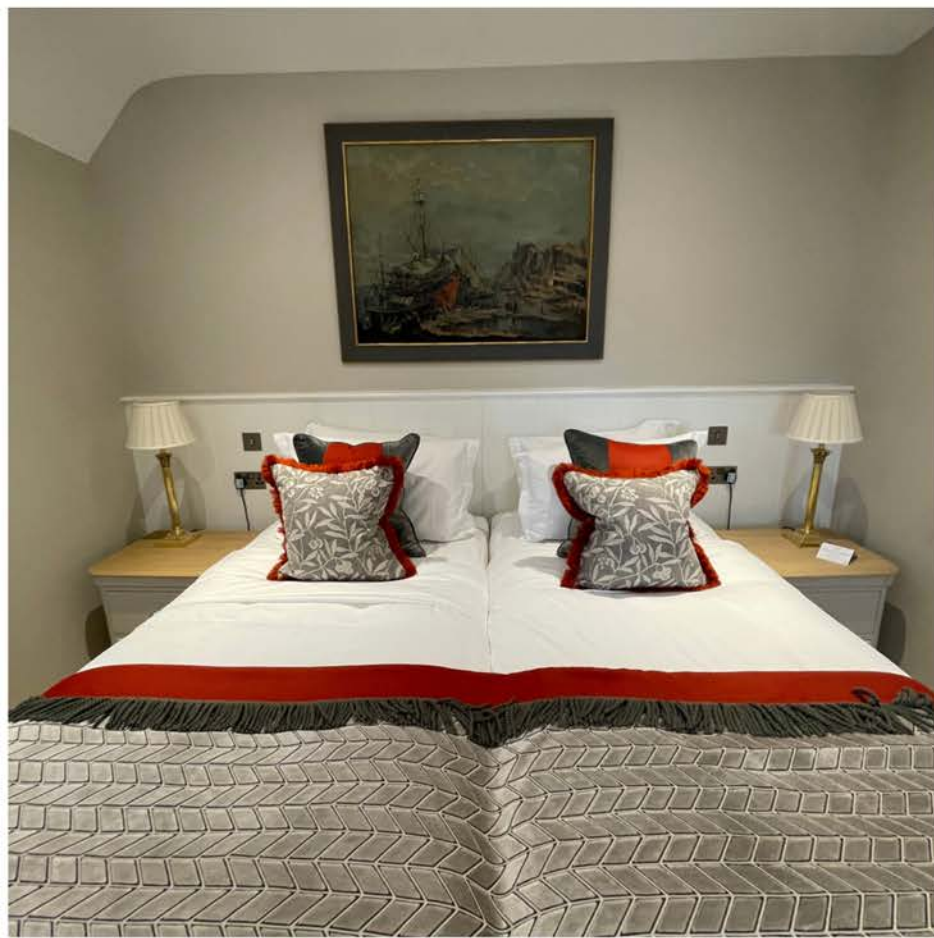
- 1 ground floor double bedroom with ensuite shower
- 1 first floor double bedroom with ensuite shower and bath
- 1 first floor twin bedroom with ensuite shower and bath
- Modern country kitchen with range cooker
- Open-plan kitchen and dining room
- Lounge with bifold doors to the rear garden
- Snug lounge with small desk
- Private garden with terrace

Amenities:

- Wi-Fi
- TV in kitchen diner, all bedrooms and snug
- Dog-friendly (maximum 2, medium size)
- Dedicated parking







SQUIRES COTTAGE

Grand Cottage (4-bed)

Squires is our largest detached stone-built cottage, with interiors offering a stylish British design. It is located near the Spa and a short walk to the main hotel. Squires sleeps up to 8 guests, plus 1 infant cot.

Description:

- 1 ground floor double bedroom with ensuite shower
- 1 first floor, modern 4-poster bedroom with ensuite shower and bath
- 1 first floor double bedroom with ensuite shower and bath
- 1 first floor twin bedroom with ensuite shower and bath
- Modern country kitchen with range cooker
- Open-plan kitchen, living and dining room with wood-burning stove
- Large private garden with terrace

Amenities:

- Wi-Fi
- TV in living room and all bedrooms
- Dog-friendly (maximum 2, medium size)
- Dedicated parking







RESIDENT FACILITIES

Secluded escapes with 5-star hotel luxury

Enjoy full flexibility during your stay, with the option of a self-contained cottage, and access the luxury hotel amenities, including 2 restaurants, equestrian centre, children's play facilities, and an award-winning spa.

In the hotel indulge in a traditional afternoon tea with homemade fayre. Then later in the evening enjoy pre-dinner drinks in the Library and Drawing Room, followed by an unforgettable Michelin-starred dining experience in **Restaurant Hywel Jones**.

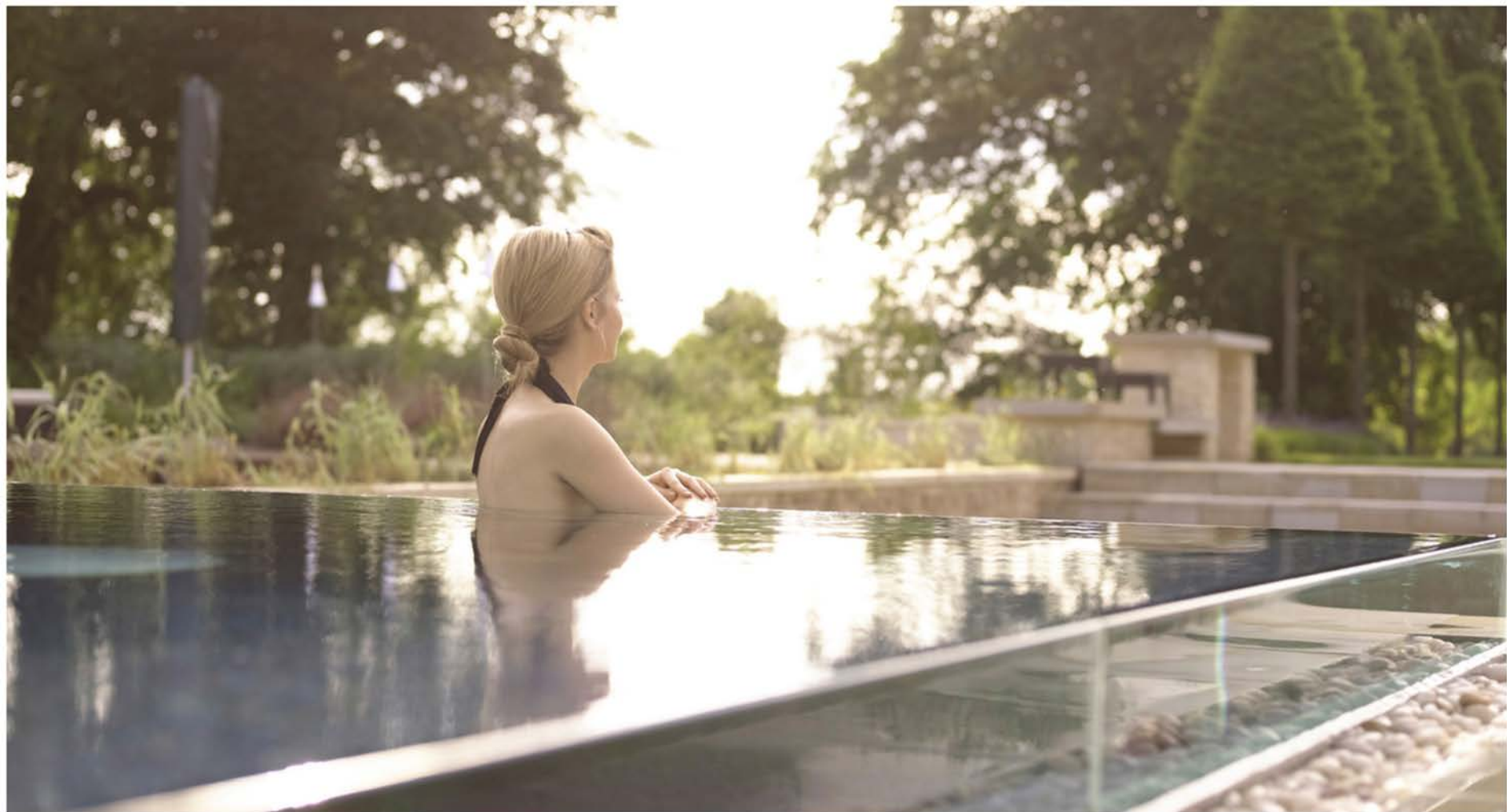
Walled Garden Restaurant offers all-day casual dining with delicious seasonal menus, or kick back in the bar area and choose from an extensive selection of cocktails, wine and nibbles.

Take a rejuvenating dip in the Spa's stunning 20-metre indoor pool, enjoy the tranquillity of the indoor/outdoor hydrotherapy pool with views of the arboretum, or book a treatment with one of our highly trained specialists.

The best way to explore our 500-acre estate is on horseback, and our Equestrian Centre offers a range of experiences suitable for multiple abilities and ages.







A FAMILY-FRIENDLY HAVEN

Enjoy quality time & make memories

Fun, friendly and full of entertainment - experience new activities, or go on a bug hunt through the parkland.

Located just 6 miles from Bath and within easy reach of popular family destinations such as Longleat, Bowood, and Cotswolds Water Park, Lucknam Park is an ideal choice for a family break.

Whatever the weather, little ones with their parents can keep entertained in our fantastic family facility, The Hideaway. Set just a short walk away from the cottages, the wooden lodge is a place for fun and activities that will see imaginations come to life. With a nearby Activity Pod featuring table tennis, a pool table, at the outdoor play area with musical instruments you'll be spoilt for choice.





GOOD TO KNOW

Additional information

- Our cancellation policy for cottages is 14 days with pre-payments in full required 14 days prior to your day of arrival
- Check-in is available from 3pm
- Check-out is 10am
- Breakfast is available in Walled Garden Restaurant and is charged as taken
- Room service is available to cottages 12pm-10pm
- All hotel facilities, including dining, require pre-booking and subject to availability
- Dogs are welcome with notice at time of booking, and carry a surcharge
- Cots and highchairs can be supplied with prior notice. There is a surcharge for an infant in cottages when maximum room capacity is used
- Management is on-site in the main hotel
- Daily change of linen and towels included with all cottage bookings
- Chargeable concierge services available including full housekeeping service
- Electric car chargers available in the main carpark and cottage carpark
- Helicopter landing pad available with prior notice





LUCKNAM PARK HOTEL & SPA, COLERNE, SN14 8AZ

Tel: +44 (0)1225 742777

www.lucknampark.co.uk

Follow us: @lucknam_park

