

1720



LUCKNAM PARK

HOTEL | SPA | COTTAGES | EQUESTRIAN



EMBLEMS
COLLECTION

EMBLEMS

COLLECTION

Emblems Collection is a curated portfolio of exceptional luxury hotels and resorts worldwide. From iconic Heritage mansions to serene nature Retreats and striking architectural Signatures, each property embodies culture, creativity, and craftsmanship. With a refined sense of place and understated elegance, Emblems offers exclusive experiences for discerning travelers. Found in prime city locations or breathtaking natural settings, these hotels blend intimate, residential charm with world-class hospitality. The first Emblems properties will debut in Europe in 2025, with a goal of 60 establishments globally by 2032. Emblems Collection is part of Accor, a world-leading hospitality group with 5,600 hotels in over 110 countries and the ALL Accor, a booking platform and loyalty program providing access to a wide variety of rewards, services and experiences.

It's the Soul that makes Emblems.





HOME AWAY FROM HOME

Lucknam Park is a magnificent *Palladian mansion* dating from 1720. Maintained as a family home until 1987, it then opened its doors as one of the UK's top country house hotels. Set in *500 acres* of listed parkland and beautiful gardens, Lucknam Park has been lovingly restored to *the elegance and style of the past era*.

The distinguished hotel was awarded three Michelin Guide Keys in 2024, and boasts 42 individually styled rooms and suites, 9 stunning luxury cottages, Michelin-star dining, an award-winning Spa, Equestrian Centre, The Hideaway, outdoor play area with musical instruments, Activity Pod and much more.

Lucknam Park is truly one of England's finest hotels, providing 5-star luxury at every turn.

A warm welcome awaits you from our friendly and dedicated team, who will do everything possible to ensure you have a great stay. As our guests tell us, Lucknam Park offers a 'home away from home' atmosphere, with all the added luxury you would expect from a 5* country hotel.

Lucknam Park is privately owned, and a proud member of Emblems Collection - we strive to offer the very best facilities, comfort, food and service associated with their quality.



ROOMS & SUITES

Refined luxury blended with 21st century living

Each of our 42 bedrooms and suites are individually curated with unique key features and stunning English furnishings, combining style, comfort and relaxation to create the ultimate escape.

Antique furniture sits alongside contemporary touches to ensure the historic rooms are true to their past and provide everything you would expect from a 5-star hotel in the 21st century.

With stunning décor and sweeping views, our rooms offer a stylish take on what is quintessentially British, with bathrooms that echo pure splendour - finished using the finest marble.

CLASSIC ROOMS

From 14m²

The snug classic rooms are located in the main country house or around the tranquil courtyard. They offer effortless 5-star luxury and indulging comfort on a smaller scale. Each room is individually decorated and feature lovingly restored antique furniture and soft bedding to ensure a relaxing stay and a good night's sleep. These snug, classically designed hotel rooms are elegant and the perfect setting for discovering Bath, the wonderful county of Wiltshire and The Cotswolds.

BEDDING

- ◆ Egyptian cotton

OCCUPANCY

- ◆ 2 people

AMENITIES

- ◆ Flat screen TV
- ◆ Tea & coffee facilities
- ◆ Nespresso coffee machine
- ◆ Water
- ◆ Hair dryer

COMFORT

- ◆ Robe & slippers
- ◆ Turn down service
- ◆ Room service



COUNTRY ROOMS

From 16m²

Located in the main country house or around the tranquil courtyard, the Country Rooms are slightly more spacious than our cosy Classic Rooms with a little extra room for a few more luxuries. Enjoy magnificent views of the courtyard or admire the architecture of the house from a whole different angle. The Country Rooms are all individually decorated, each featuring a fabulous collection of fine antiques and luxury hand-made soft furnishings to admire and take pleasure in. A perfect room for two adults on a short getaway for two near Bath!

BEDDING

- ◆ Egyptian cotton

OCCUPANCY

- ◆ 2 people

AMENITIES

- ◆ Flat screen TV
- ◆ Tea & coffee facilities
- ◆ Nespresso coffee machine
- ◆ Water
- ◆ Hair dryer

COMFORT

- ◆ Robe & slippers
- ◆ Turn down service
- ◆ Room service



MANOR ROOMS

From 20m²

The medium-sized Manor Rooms are located in the main house as well as our courtyard. All individually designed and decorated with a bespoke selection of fine antiques and luxury handmade soft furnishings, each room has its own luxurious marble finished bathroom.

BEDDING

- ◆ Egyptian cotton

OCCUPANCY

- ◆ 2 people

AMENITIES

- ◆ Flat screen TV
- ◆ Tea & coffee facilities
- ◆ Nespresso coffee machine
- ◆ Water
- ◆ Hair dryer

COMFORT

- ◆ Robe & slippers
- ◆ Turn down service
- ◆ Room service



JUNIOR SUITE

From 27m²

Located in the country house courtyard and the rose cottage, these spacious suites have views overlooking the exquisite rose garden. Quintessentially English with furnishings to match, the beds, fine antique furniture and sumptuous soft furnishings offer a refreshing style to what is classically British.

BEDDING

- ◆ Egyptian cotton

AMENITIES

- ◆ Flat screen TV
- ◆ Tea & coffee facilities
- ◆ Nespresso coffee machine
- ◆ Water
- ◆ Hair dryer

OCCUPANCY

- ◆ 2 people
- ◆ 1 child – in selected rooms

COMFORT

- ◆ Robe & slippers
- ◆ Turn down service
- ◆ Room service



GRAND SUITE

From 35m²

Located in the main country house and courtyard, the Grand Suites offer a setting of pure splendour and therefore a popular choice for our guests seeking opulent luxury. All Grand Suites have been refurbished using a wonderful collection of fine antiques and luxury fabrics. Fall asleep comfortably in the magnificent beds, dressed in the very best Egyptian cotton bedding to ensure the ultimate comfort. Welcome a good night's sleep with the rest of your family or friends with the option of interconnecting rooms that feature alongside a selection of the Grand Suites.

BEDDING

- ◆ Egyptian cotton

AMENITIES

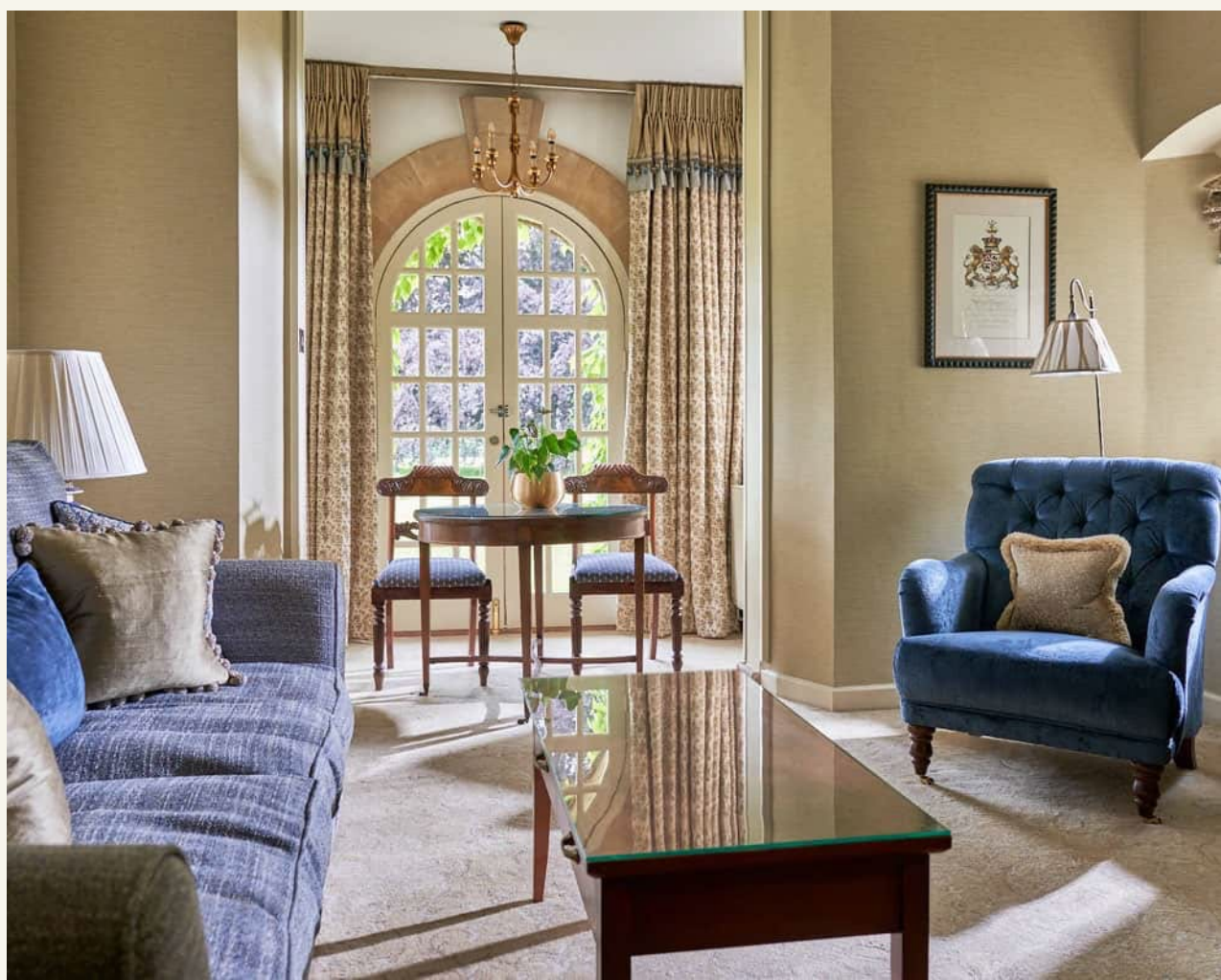
- ◆ Flat screen TV
- ◆ Tea & coffee facilities
- ◆ Nespresso coffee machine
- ◆ Water
- ◆ Hair dryer

OCCUPANCY

- ◆ 2 adults
- ◆ 2 children – in selected rooms

COMFORT

- ◆ Robe & slippers
- ◆ Turn down service
- ◆ Room service



GRAND MASTER SUITE

From 54m²

The medium-sized Manor Rooms are located in the main house as well as our courtyard. All individually designed and decorated with a bespoke selection of fine antiques and luxury handmade soft furnishings, each room has its own luxurious marble finished bathroom.

BEDDING

- ◆ Egyptian cotton

OCCUPANCY

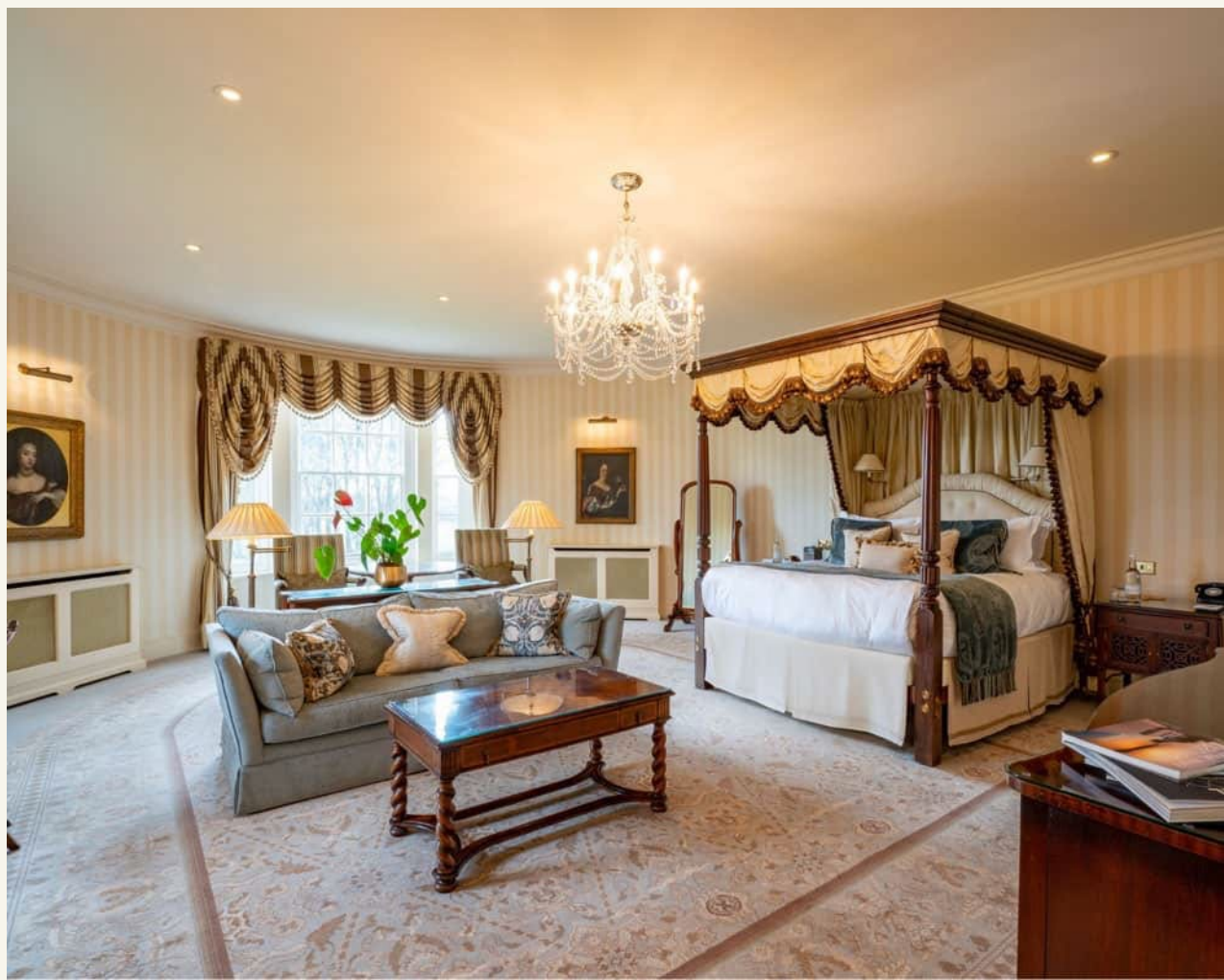
- ◆ 2 people

AMENITIES

- ◆ Flat screen TV
- ◆ Tea & coffee facilities
- ◆ Nespresso coffee machine
- ◆ Water
- ◆ Hair dryer

COMFORT

- ◆ Robe & slippers
- ◆ Turn down service
- ◆ Room service





THE COTTAGES

Your very own slice of Lucknam

Nestled amidst the estate, our 9 charming country cottages are perfect for families, small groups, or couples seeking an indulgent retreat.

Enjoy the flexibility of cooking in beautifully designed and appointed kitchens or enjoy room service delivered to your door. The cottages offer complete privacy while allowing guests full use of the luxury hotel facilities, including both restaurants and the award-winning spa.

All our cottages offer a range of occupancies and are dog-friendly, with spacious living areas, ensuite bathrooms, and enclosed gardens with terraces.

[COTTAGE BROCHURE](#) 

KEEPER'S COTTAGE – 3 BED COUNTRY COTTAGE

From 150 m²

This pretty stone cottage is situated near to the Equestrian Centre, just a short walk from the hotel. The interiors offer a quintessential British design perfect for families and small groups. Keeper's Cottage sleeps a maximum of 6 guests and 1 additional infant cot.

FEATURES

- ◆ 1 first floor double bedroom with ensuite shower
- ◆ 1 ground floor twin bedroom with ensuite shower
- ◆ 1 ground floor double/twin bedroom with ensuite bath and shower
- ◆ Hand-built country kitchen with range cooker
- ◆ Dining room
- ◆ Upstairs living room with wood-burning stove
- ◆ Enclosed small garden and terrace

OCCUPANCY

- ◆ Up to 6 people and 1 infant cot

COMFORT & AMENITIES

- ◆ Wi-Fi
- ◆ TV in living room and all bedrooms
- ◆ Dedicated parking
- ◆ Dog-friendly (maximum of 2 medium dogs)
- ◆ Robe & slippers
- ◆ Cottage Room service





THATCHER'S COTTAGE – 3 BED COUNTRY COTTAGE

From 186 m²

Thatcher's Cottage is a quaint stone cottage situated near the Equestrian Centre, just a short walk from the hotel. Perfect for families and small groups, it sleeps 6 guests with room for 1 additional infant cot.

FEATURES

- ◆ 1 ground floor double bedroom with ensuite shower
- ◆ 1 first floor twin bedroom with ensuite shower
- ◆ 1 first floor double bedroom with ensuite bath and shower
- ◆ Modern country kitchen with range cooker
- ◆ Open-plan kitchen and dining room with wood-burning stove
- ◆ Conservatory
- ◆ Enclosed garden and terrace

OCCUPANCY

- ◆ Up to 6 people and 1 infant cot

COMFORT & AMENITIES

- ◆ Wi-Fi
- ◆ TV in kitchen, conservatory and each bedroom
- ◆ Dedicated parking
- ◆ Dog-friendly (maximum of 2 medium dogs)
- ◆ Robe & slippers
- ◆ Cottage Room service





GATE HOUSE – 1 BED MANOR COTTAGE

From 102 m²

This striking stone-built cottage has all the historic features one would expect from a Gate House. With a cosy, writer's cottage feel, this 1-bed sanctuary offers the perfect getaway for 2 guests.

FEATURES

- ◆ Sleeps up to 2 adult guests (no children permitted)
- ◆ 1 double bedroom
- ◆ Country kitchen with modern oven
- ◆ Dining room
- ◆ Good size enclosed garden and terrace

OCCUPANCY

- ◆ Up to 2 people

COMFORT & AMENITIES

- ◆ Wi-Fi
- ◆ TV in living room and bedroom
- ◆ Dedicated parking
- ◆ Dog friendly (maximum of 2, medium size)
- ◆ Robe & slippers
- ◆ Cottage Room service





PADDOCK VIEW

From 186 m²

Located near the Equestrian Centre, this stone-built 3-bed cottage has sweeping views of the fields beyond its manicured garden. Sleeping up to 6 guests plus 1 additional infant cot, this cottage makes the perfect accommodation for a family, group of friends, or work stay.

FEATURES

- ◆ 2 first floor double rooms with ensuite shower
- ◆ 1 first floor twin room with ensuite shower and bath
- ◆ Modern country kitchen with range cooker
- ◆ Open-plan kitchen and dining room
- ◆ Sitting room with large patio doors and wood-burning stove
- ◆ Large private garden with terrace

OCCUPANCY

- ◆ Up to 6 people and 1 infant cot

COMFORT & AMENITIES

- ◆ Wi-Fi
- ◆ TV in kitchen diner and bedrooms
- ◆ Dedicated parking
- ◆ Dog friendly (maximum of 2, medium size)
- ◆ Robe & slippers
- ◆ Cottage room service





COACH HOUSE – 3 BED MANOR COTTAGE

From 152 m²

Nestled in a quiet corner near the Equestrian Centre, this 3-bed cottage blends into nature with its stone walls and pale green wooden frames. Sleeping up to 6 guests plus 1 additional infant cot, Coach House makes the perfect accommodation for a family, group of friends, or work stay.

FEATURES

- ◆ 2 first floor double rooms with ensuite shower
- ◆ 1 first floor twin room with ensuite shower and bath
- ◆ Modern country kitchen with range cooker
- ◆ Open plan kitchen and dining room with wood burning stove
- ◆ Snug lounge
- ◆ Large private garden with terrace

OCCUPANCY

- ◆ Up to 6 people with 1 infant cot

COMFORT & AMENITIES

- ◆ Wi-Fi
- ◆ TV in kitchen diner and bedrooms
- ◆ Dedicated parking
- ◆ Dog-friendly (maximum of 2, medium size)
- ◆ Robe & slippers
- ◆ Cottage room service





APPLE & PEAR TREE – 2 BED GRAND COTTAGES

From 104 m²

This pair of beautiful stone-built cottages sit next to each other in mirror image. They are both designed in a modern, country cottage style and have their own enclosed garden and terrace. These cottages sleep up to 4 guests plus 1 infant cot.

FEATURES

- ◆ 1 double with ensuite and copper bath
- ◆ 1 double/twin room with ensuite shower
- ◆ Modern country kitchen with range cooker
- ◆ Kitchen dining room
- ◆ Lounge with wood-burning stove
- ◆ Private garden with terrace

OCCUPANCY

- ◆ Up to 4 people

COMFORT & AMENITIES

- ◆ Wi-Fi
- ◆ TV in kitchen diner and bedrooms
- ◆ Dog-friendly (maximum 2, medium size)
- ◆ Dedicated parking
- ◆ Robe & slippers
- ◆ Cottage room service





MIDDLE LODGE

From 180 m²

Middle Lodge is our largest 3-bed stone built cottage with a large manicured gardens to the front and rear. It is located near the Equestrian Centre and is a short walk to the main hotel facilities. This cottage can accommodate 6 guests and 1 infant cot.

FEATURES

- ◆ 1 ground floor double bedroom with ensuite shower
- ◆ 1 first floor double bedroom with ensuite shower and bath
- ◆ 1 first floor twin bedroom with ensuite shower and bath
- ◆ Modern country kitchen with range cooker
- ◆ Open-plan kitchen and dining room
- ◆ Lounge with bifold doors to the rear garden
- ◆ Snug lounge with small desk
- ◆ Private garden with terrace

OCCUPANCY

- ◆ Up to 6 people and 1 infant cot

COMFORT & AMENITIES

- ◆ Wi-Fi
- ◆ TV in kitchen diner, all bedrooms and snug
- ◆ Dog-friendly (maximum 2, medium size)
- ◆ Dedicated parking
- ◆ Robe & slippers
- ◆ Cottage room service





SQUIRES

From 250 m²

Squires is our largest detached stone-built cottage, with interiors offering a stylish British design. It is located near the Spa and a short walk to the main hotel. Squires sleeps up to 8 guests, plus 1 infant cot.

FEATURES

- ◆ 1 ground floor double bedroom with ensuite shower
- ◆ 1 first floor, modern 4-poster bedroom with ensuite shower and bath
- ◆ 1 first floor double bedroom with ensuite shower and bath
- ◆ 1 first floor twin bedroom with ensuite shower and bath
- ◆ Modern country kitchen with range cooker
- ◆ Open-plan kitchen, living and dining room with wood-burning stove
- ◆ Large private garden with terrace

OCCUPANCY

- ◆ Up to 8 people and 1 infant cot

COMFORT

- ◆ Wi-Fi
- ◆ TV in living room and all bedrooms
- ◆ Dog-friendly (maximum 2, medium size)
- ◆ Dedicated parking
- ◆ Robe & slippers
- ◆ Cottage room service







THE CULINARY EXPERIENCE

A taste of Lucknam

Our culinary experience is a journey through refined flavours and timeless traditions—from the artistry of our Michelin-starred restaurant, where creativity and precision elevate the finest ingredients, to the relaxed elegance of the Walled Garden Restaurant, with its seasonal dining menu showcasing fresh, locally inspired dishes. Alternatively, guests can indulge in the ritual of afternoon tea, reimagined with handcrafted delicacies and premium teas—all combining to offer a complete taste of luxury.

RESTAURANT HYWEL JONES

Michelin-star dining

Restaurant Hywel Jones offers an unforgettable dining experience, offering either a four-course or eight-course tasting menu and wine parings carefully selected by our Head Sommelier.

In 2026 Chef Jones was awarded his 21st consecutive Michelin Star at the restaurant.

In January 2026 Restaurant Hywel Jones will undergo an exciting renovation to modernise this expansive space, keeping in line with the tradition and history of the building.



MICHELIN



Rendered image



WALLED GARDEN RESTAURANT

Seasonal all-day dining

Possessing all the romance and serenity of an English country garden, the Walled Garden Restaurant provides guests with a week-round, all-day dining experience.

Head Chef Alex Greene's menu celebrates local ingredients and fresh produce, such as spring lamb reared on the estate's grounds. An à la carte menu is served for lunch and dinner, changing with the seasons, and a lounge and specials menu are also available. Featuring a destination bar and lounge, sit and sip on a glass of English sparkling wine, or savour a cocktail from our fantastic bar menu.

Indulgent Sunday lunches are the perfect way to end the week, with the option for a 2 or 3-course set menu.



TRADITIONAL AFTERNOON TEA

In the elegance of the Drawing Room

At our Palladian mansion, we evoke a bygone era of Regency splendour. Guests can spend lazy afternoons beside the book-lined walls of the Library, in the sunlit Drawing Room, or out on the front lawn, surrounded by birdsong and sweeping parkland views. Here, we invite them to relax with a glass of Champagne in hand while indulging in a traditional afternoon tea—complete with delicate finger sandwiches, dainty patisserie, freshly baked scones with clotted cream and homemade preserve, and a curated selection of fine teas or coffee.

Our younger guests are never forgotten, thanks to our dedicated Children's afternoon tea menu, which includes ham, cheese, and cucumber sandwiches, sausage rolls, strawberry jam doughnuts, chocolate brownies, and Nutella scones.



SIGNATURE BREAKFAST

Breakfast with a view

Served in the light-filled Walled Garden Restaurant, the morning menu offers a blend of classic English fare and lighter continental options — from buttery pastries and fresh fruit to expertly prepared eggs and locally sourced sausages. With attentive service and garden views framing your first coffee of the day, it's not just a meal, it's a moment of calm, country house charm at its finest.





EVENTS & WEDDINGS

We set the scene for your perfect day

With 4 elegant function rooms to choose from, Lucknam Park is the ideal location for your event. From engagement parties and romantic meals, to executive meetings and networking dinners, we can tailor the experience to suit you. Our Executive Chef, Hywel Jones, will create a menu to fit the occasion and our sommelier will ensure fine wines to accompany.

For a special event like no other, Lucknam Park is available to hire as your own exclusive venue, including all 42 luxurious bedrooms and suites, and 9 country cottages.

Arrival by helicopter, candlelit dinners, midnight snacks, horse rides around the estate - whatever your request, we aim to deliver.

[MEETINGS & EVENTS BROCHURE](#)



PROPOSAL & WEDDINGS

A playground for the finest events

At the end of the mile-long driveway, double lined with Beech and Lime trees, is the perfect setting for a romantic occasion.

The day that you have always dreamed of begins from the moment you take a glimpse at the magnificent Palladian mansion, surrounded by countryside.

From intimate fairy tale weddings to exclusive opulent celebrations, bring your friends and family together at a venue offering elegance, charm and the utmost attention to detail from the team.

- ◆ 2 rooms
- ◆ Up to 60 people



CORPORATE MEETINGS

Working in style

Lucknam Park is the ideal location for hosting meetings and events, with five elegant function rooms that are perfect for top-level discussions. Each room offers flexible space, making them ideal for creative exchanges, networking sessions, working lunches, and private dining. Located near Bath in Wiltshire, Lucknam Park is the perfect setting for your next event.

- ◆ 5 rooms
- ◆ Up to 120 people



CAPACITY CHART

MEETING ROOM	Size ft ²	Cabaret	Boardroom	Theatre	Classroom	Private Dining
The Boardroom	365	N/A	8	N/A	N/A	8
The Wallis	306	N/A	10	16	N/A	10
The Music Room	580	N/A	24	50	24	30
The Walmesley Room	429	N/A	16	40	18	22
Restaurant Hywel Jones	1403	42	32	110	60	80





WELLNESS EXPERIENCE

The ultimate escape

Set within the estate's 500-acres of unspoilt Wiltshire parkland, the spa is totally at one with its surroundings, incorporating wood, marble and glass to reflect the warm seasonal hues of the outdoors.

Our highly trained specialists perform a range of personalised luxury spa treatments including massages, facials, scrubs and holistic therapies in our 8 therapy rooms.

Take a rejuvenating dip in the 20-metre indoor pool, or the indoor/outdoor hydrotherapy pool offers a tranquil space to relax with views of the arboretum.

The award-winning facilities also include 5 thermal cabins, post-treatment relaxation room, and a social lounge with a skincare mixology bar.

SPA TREATMENTS

Relax and unwind

Rejuvenate with our carefully curated selection of exclusive treatments; each thoughtfully crafted by our team of exceptionally skilled therapists. Every experience has been created to deliver an unparalleled journey of self-care, blending expert techniques with the most prestigious brands.

Whether you're seeking a soothing escape or targeted results, our bespoke therapies ensure a lasting immersion into serenity

TREATMENT COLLECTIONS

- ◆ Signature Treatments
- ◆ Wellbeing Treatments
- ◆ Performance Treatments
- ◆ Discovery Treatments

FOR SPA ENQUIRIES AND BOOKINGS

Please call: +44 (0)1225 740 570

Email: lp.spa@lucknampark.co.uk

[SPA BROCHURE](#) 





RECREATIONAL EXPERIENCE

Enjoy quality time & make memories

At our luxury hotel every moment of leisure is designed to inspire and delight. Spend your days exploring our 500 acres of private parkland and gardens or awaken your senses with a wellness journey in our world class spa.

For the adventurers enjoy unique equine experiences at our equestrian centre which houses 12 horses or enjoy in a country sport such as clay pigeon shooting or archery.

41

There is also opportunity to partake in a game of croquet on the lawn, play a match on one of our tennis courts or 5-a side football pitches.

EQUESTRIAN CENTRE

Explore the estate on horseback

Horses add their own style to a country house setting.

The Equestrian Centre houses a beautiful selection of horses all of mixed breed, size and capability. Our Equestrian experiences can be tailored for both children and adults, for complete beginners or experienced riders.

Children from the age of 4 years can participate in a pony experience when accompanied by a parent or guardian. More advanced horse riders can enjoy escorted hacks around the estate, tailored to their ability.

[EQUESTRIAN BROCHURE](#)



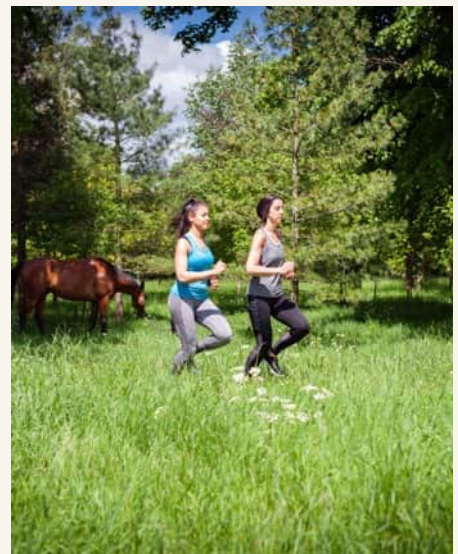
THE GREAT OUTDOORS

Breathtaking countryside on your doorstep

Lucknam Park has been connected with its natural surroundings from the very beginning. Explore 5 acres of garden, including the stunning Walled Garden which dates back to the 1830s, and a further 500 acres of listed parkland which hosts the Arboretum and allows for endless possibilities, with a range of outdoor pursuits.

LEISURE ACTIVITIES

- ◆ The Hideaway
- ◆ Tennis
- ◆ Yoga
- ◆ Croquet
- ◆ Tours
- ◆ Cycling
- ◆ Clay pigeon shooting
- ◆ Falconry
- ◆ Archery
- ◆ Duck herding
- ◆ Walking & running trails
- ◆ Football





A FAMILY-FRIENDLY HAVEN

Enjoy quality time & make memories

Fun, friendly and full of entertainment - experience new activities, ride into the surrounding countryside, or go on a bug hunt through the parkland.

Located just 6 miles from Bath and within easy reach of popular family destinations such as Longleat, Bowood, and Cotswolds Water Park, Lucknam Park is an ideal choice for a family break.

Whatever the weather, little ones with their parents can keep entertained in our fantastic family facility, The Hideaway. Set just a short walk away from the hotel, the wooden lodge is a place of fun and activities that will see imaginations come to life. With a nearby Activity Pod featuring table tennis, a pool table, musical instruments, and an outdoor play area, you'll be spoilt for choice.

ACTIVITIES FOR KIDS

- ◆ The Hideaway
- ◆ Outdoor Play area
- ◆ Activity Pod
- ◆ Equestrian Centre
- ◆ Scavenger Hunt
- ◆ Estate Walks
- ◆ Bike hire
- ◆ Swimming Pool



LOCAL ATTRACTIONS

Discover South West England

Make the most of your stay at Lucknam Park with a great array of local attractions, all within about an hour's travelling time from Lucknam Park.



THE ROMAN BATHS

Ancient hot springs and one of the best-preserved Roman sites in the world.

www.romanbaths.co.uk



THE STONEHENGE

A prehistoric World Heritage site in Wiltshire, consisting of a lintelled stone circle of sarsens and bluestones aligned with the sun.

www.english-heritage.org.uk



BATH RUGBY

One of England's oldest and most successful rugby union clubs, playing at the scenic Recreation Ground in the heart of Bath.

www.bathrugby.com



CASTLE COMB RACE CIRCUIT

A historic, fast and technical racing venue in Wiltshire, England, with a charming rural setting and a challenging layout born from a former RAF airfield.

www.castlecombecircuit.co.uk



CASTLE COMB VILLAGE

Nestled in the Cotswolds, Castle Combe is a picturesque village of honey-coloured stone cottages, historic charm, and scenic walks by the river.

www.visitwiltshire.co.uk



DYRHAM PARK

Dyrham Park is a 17th-century baroque mansion set within a vast deer park in the South Cotswolds.

www.nationaltrust.org.uk/visit/bath-bristol/dyrham-park



LONGLEAT SAFARI PARK

A magnificent Elizabethan stately home set in Capability Brown-landscaped parkland, renowned as the site of the UK's first drive-through safari park, a vast hedge maze, and lush formal gardens.

www.longleat.co.uk



WESTONBIRT ARBORETUM

A world-famous collection of trees and shrubs, offering scenic walks through vibrant woodlands across the seasons.

www.forestryengland.uk/westonbirt-the-national-arboretum



LACOCK VILLAGE

A picturesque village with National Trust Abbey, cobble streets, historic cottages and century inns. This is a firm favourite for film and TV producers.

www.nationaltrust.org.uk/visit/wiltshire/lacock



BATH RACECOURSE

Known as the highest flat racecourse in the UK, Bath Racecourse is situated on Lansdown Hill with panoramic views of the city and surrounding countryside. Hosting races between April – October and many other events throughout the year.

www.bath-racecourse.co.uk/



NO.1 ROYAL CRESCENT

Take a step back in time to see how the aristocracy of Bath's golden era would have lived. The rooms here feature historic pictures, furniture and pieces that reveal what life would have been like for Bath's fashionable residents

www.no1royalcrest.org.uk



THEATRE ROYAL BATH

It is always a family favourite to take in a show at the local theatre and nowhere could be better to do that than the Theatre Royal in Bath.

www.theatroyal.org.uk



CHEDDAR GORGE

Well worth the longer journey, Cheddar has a number of things to offer, from spelunking in the caves to scaling the world-famous gorge and, of course, sampling authentic Cheddar Cheese.

www.cheddargorge.co.uk

PRACTICAL INFORMATION

ADDRESS

Lucknam Park, Emblems Collection
Colerne, Chippenham, Wiltshire
SN14 8AZ, UK

BOOKING

reservation@lucknampark.com
+44 (0)1225 742 777
Lucknampark.co.uk

ACCESS

By Car

— From M4 J17 (westbound)
A350 › A420 › Ford › Colerne › Doncombe Lane
— From M4 J18 (eastbound)
A46 › A420 › Ford › Colerne › Doncombe Lane
Free valet parking + EV charging available.

By Train

Nearest stations: Bath Spa or Chippenham (1h15–1h30 from London). Then taxi or rental car to the hotel (taxis available at stations).

By Bus

Faresaver line 228 from Bath city centre or Bath Spa station › stop “Valley Way Shelter” › 7-minute walk to the hotel.
Journey: 30–35 minutes, fare £1–£3.

By Air

Bristol Airport (32 miles) / London Heathrow (90 miles)
Private transfers/chauffeur services available (book in advance).

By Helicopter

On-site landing zone (24h notice recommended).

[HOTEL MAP](#)





1720
LUCKNAM PARK
HOTEL | SPA | COTTAGES | EQUESTRIAN
EMBLEMS COLLECTION

Lucknam Park, Emblems Collection
Colerne, Chippenham, Wiltshire, SN14 8AZ, United Kingdom
lucknampark.co.uk | emblemscollection.com

