





# EVENTS AT LUCKNAM PARK

## *What we can offer*

A picturesque setting with 5 elegant function rooms, two restaurants and private areas to choose from, Lucknam Park is the ideal location for your event. From large conference weekends and team building, to executive meetings and networking dinners, we can tailor the experience to suit you.

Our Executive Chef, Hywel Jones, will create a menu to fit the occasion and our sommelier will ensure fine wines to accompany.

For a special event like no other, Lucknam Park is available to hire as your own exclusive venue, including all 42 luxurious bedrooms and suites, and 9 country cottages, an award winning spa, onsite equestrian centre and activities, and 500 acres to allow your memorable event come to life.

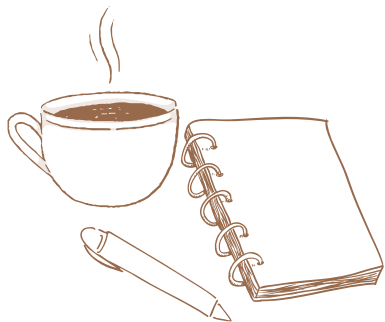


# FUNCTION ROOMS

*Beautiful & Unique*

From intimate meetings to exclusive opulent celebrations Lucknam Park has the space for any occasion. Luxury receptions, historic rooms and attention to detail all come together to create the perfect backdrop to any celebration. Small gatherings and breakout sessions enjoy the intimate surroundings of the Boardroom and Wallis rooms. The Walmesley and Music Rooms are perfect for smaller working lunches, meetings and dinners, whilst the elegance of Restaurant Hywel Jones is ideal for the larger parties and conferences. There are also a selection of beautifully secluded outdoor spaces perfectly suited to other types of events.

At Lucknam Park, we specialise in creating beautiful and unique events that you and your guests will remember forever.



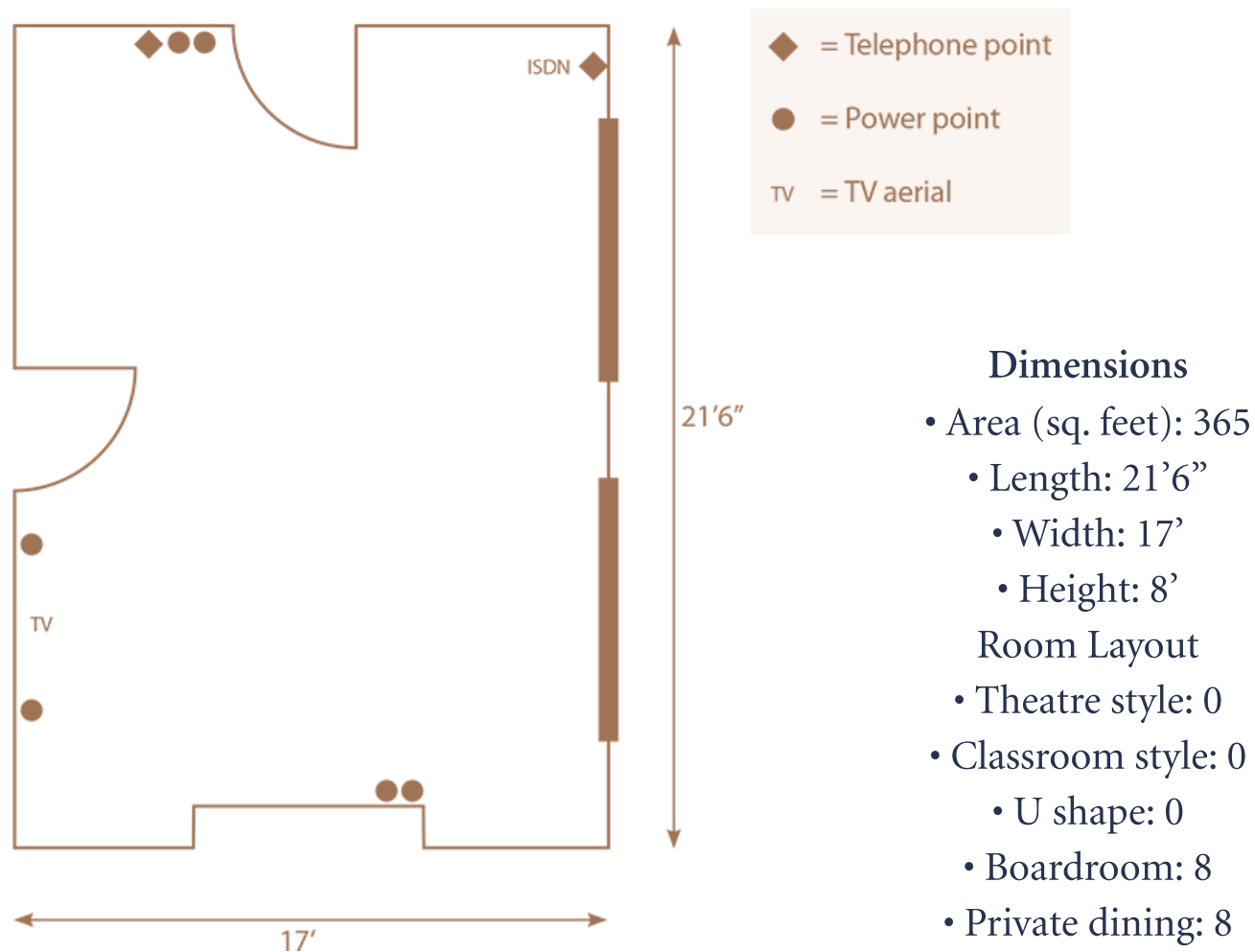


# BOARDROOM

Overlooking the courtyard with plenty of daylight. Ideal for meetings or private dinners for 8.

## Location

Ground floor in the main house overlooking the courtyard with natural daylight.



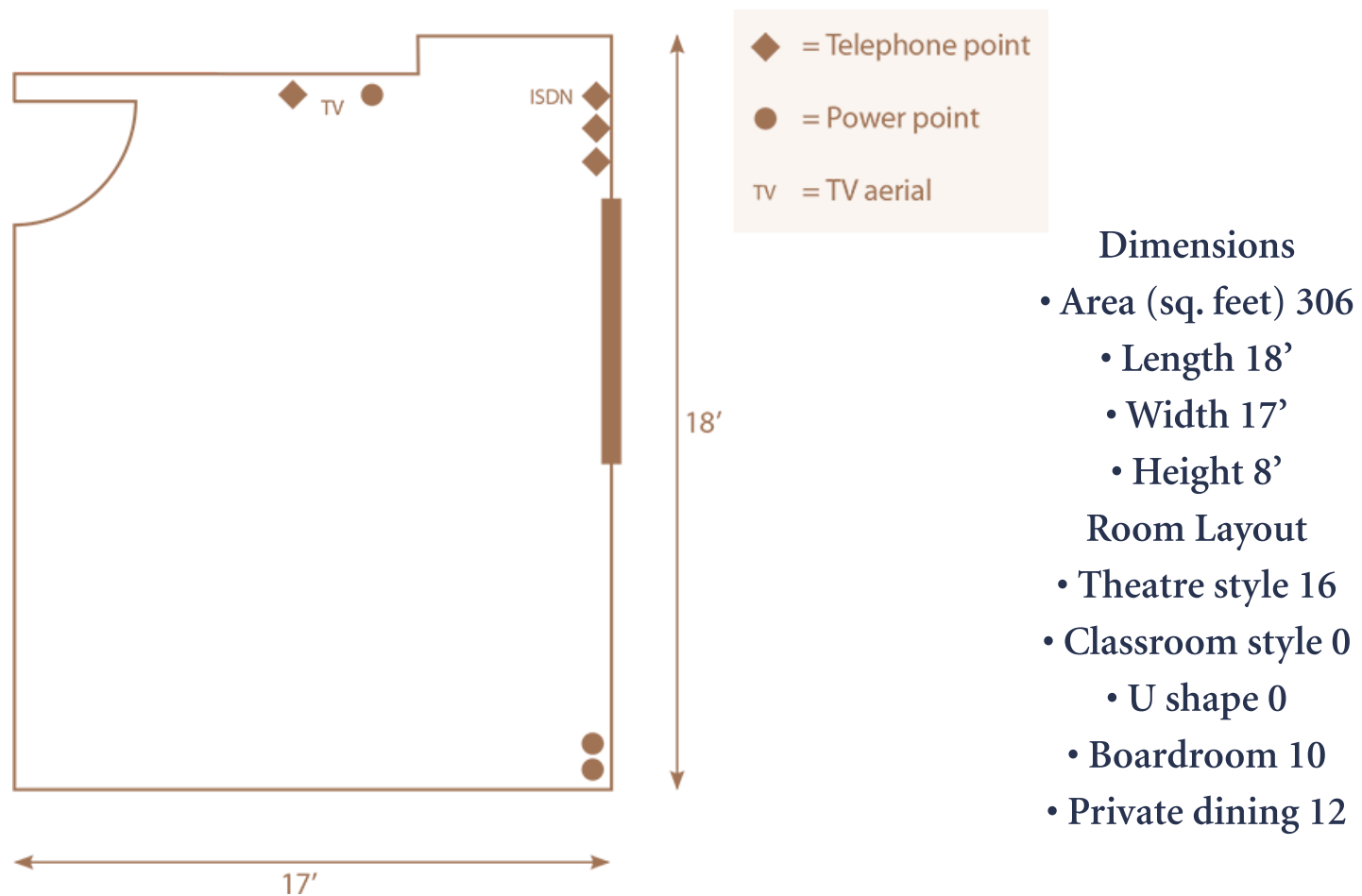


# WALLIS

The Wallis Room overlooks the courtyard with natural daylight. Slightly smaller than The Boardroom, but it accommodates 10 for boardroom style and 12 for a private dinner on an oval table.

## Location

Ground floor in the main house overlooking the courtyard with natural daylight.



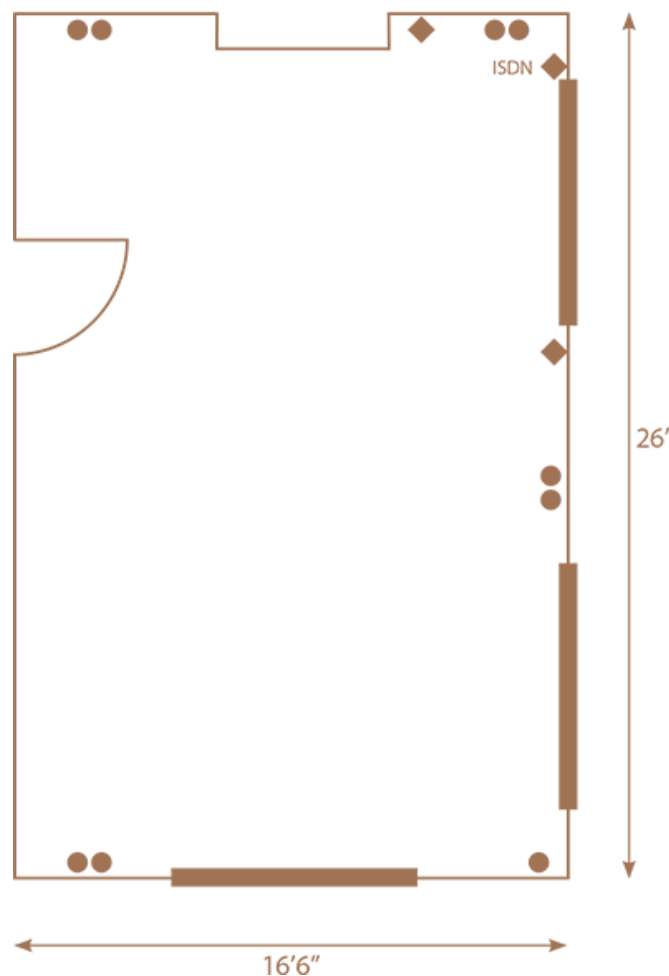


# WALMESLEY

Next to The Wallis Room and overlooking the courtyard with natural daylight. Comfortably seats 16 boardroom style and 16 for a private dining. Very versatile and is popular for small cocktail receptions and theatre style meetings/presentations.

## Location

Ground floor in the main house overlooking the courtyard with natural daylight.



◆ = Telephone point

● = Power point

TV = TV aerial

## Dimensions

- Area (sq. feet) 429
- Length 26'
- Width 17'
- Height 8'

## Room Layout

- Theatre style 40
- Classroom style 18
  - U shape 16
  - Boardroom 16
- Private dining 22 (1 table)

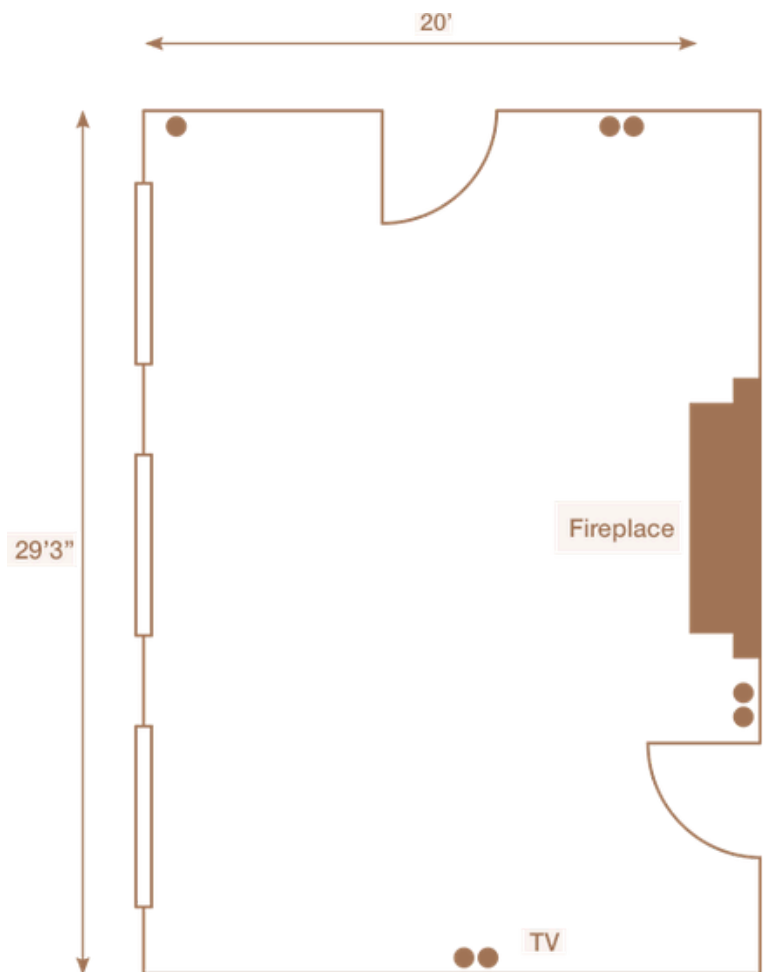


# MUSIC ROOM

Overlooking the main entrance and avenue of Beech and Lime trees. A beautiful and elegant room but versatile accommodating up to 30 for a private dinner (3 tables) or 50 for a theatre style meeting.

## Location

Ground floor in the main house overlooking the main entrance and avenue with natural daylight.



◆ = Telephone point

● = Power point

TV = TV aerial

## Dimensions

- Area (sq. feet): 580
- Length: 29'
- Width: 20'
- Height: 14'

## Room Layout

- Theatre style: 50
- Classroom style: 24
  - U shape: 24
  - Boardroom: 24
- Private dining: 30 (3 tables – chairs hiring use) / 24 (1 table)

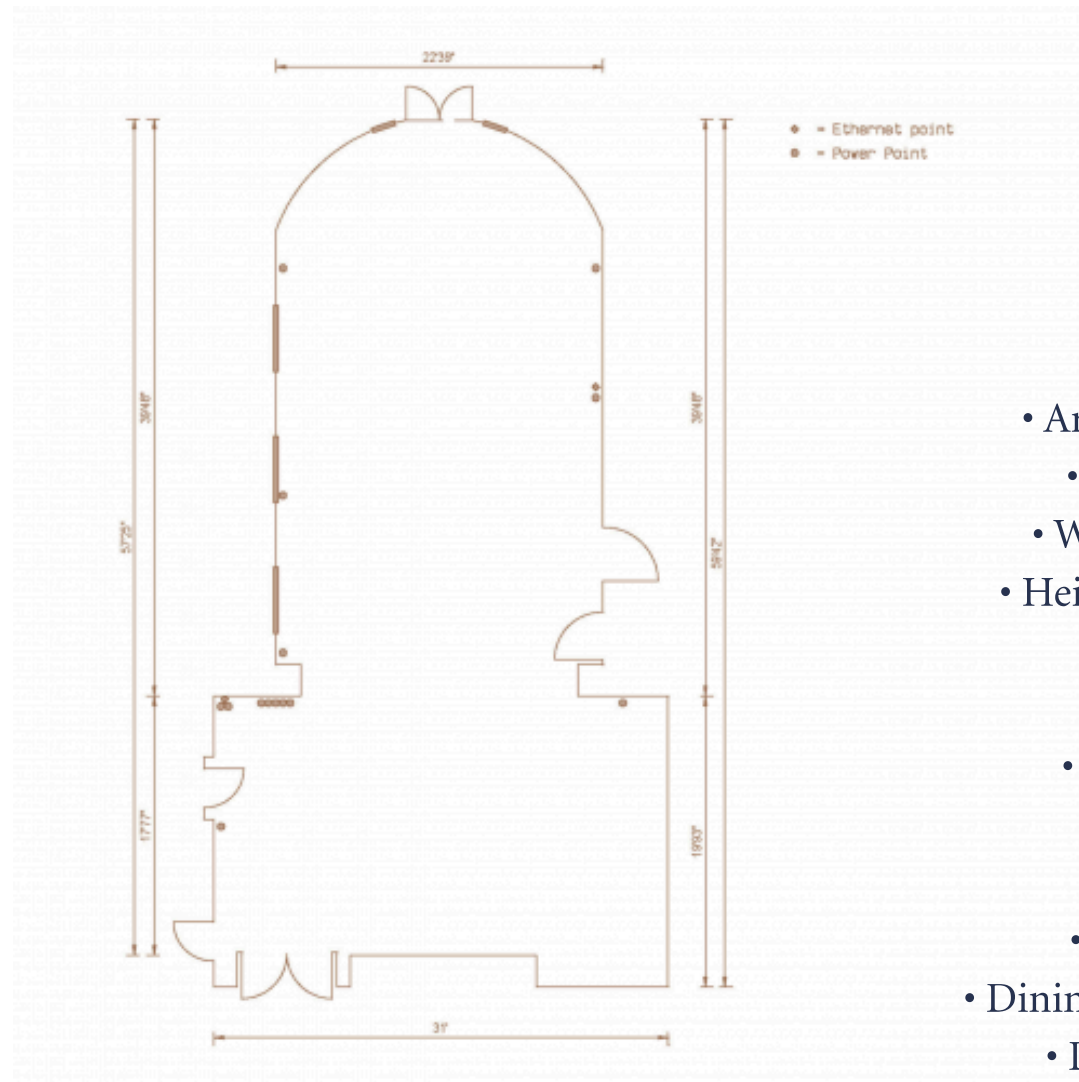


# RESTAURANT HYWEL JONES

A stunning space overlooking the main driveway and front lawns. Ideal for meetings, private dinners, or large gatherings.

## Location

Ground floor in the main house overlooking the driveway and front lawns.





# ADDITIONAL SPACES

*The options are endless*

**Library & Drawing Room** - When taking the hotel for exclusive use there is the option to also host in our library and drawing room, which have all the traditional interiors and open fires.

**The Sanctuary** - Our intimate space for small gatherings, breakout sessions or tea. This orangery is a true sanctuary.

**The Walled Garden** - An outdoor space perfect for garden parties or reception drinks.

**Walled Garden Restaurant** - During exclusive use events this Restaurant and bar is the perfect place for a large party, meeting, reception or dining.

**500 acre land** - we have open parkland that is the perfect space for marquee's, external events and structures.



# PACKAGES

*Everything you need for a seamless event*

**24 hour Delegate Package** - Enjoy all that Lucknam has to offer with an overnight stay, meeting spaces, Walled Garden lunch and dinner. Full use of the spa facilities and gym during your stay.

**Daily Delegate Package** - a one day meeting room with Walled Garden lunch, teas and coffees. A little taste of Lucknam Park.

**Exclusive Use** - An all encompassing package, where you can let your imagination take over. With all 42 bedrooms and 9 cottages, two restaurants, spa, equestrian centre and 500 acres, we can help bring your event to life.

**Tailored Event** - Our events team can discuss your requirements and help to make your event just right.





# TEAM BUILDING

*Elevate your experience*

**Equestrian Centre** - Why not add an equestrian activity into your package as a team building exercise. Welcoming everyone from seasoned riders to adult beginners

**Spa** - All overnight packages include full use of the spa facilities and gym. Spa treatments can be booked on top as a supplement.

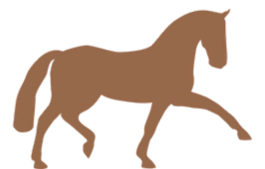
**Sports** - Onsite we have two tennis courts, a 5-a-side football pitch, Croquet on the front lawn and outdoor gym.

**Workshops** - Enjoy a cocktail masterclass or cheese tasting session. Our Bar team would be delighted to make your event a little bit more memorable.

**Country Sports & Games** - We can provide activities such as archery, clay pigeon shooting, duck herding, falconry, mini golf and more.

**Big Tent** - Run a bake off competition or put on a show. Our estate has the land to make your ideas come to life.

Other ideas will always be welcome and our Events Team will be delighted to help achieve your vision.



# WHY LUCKNAM PARK?

*Inspirational setting, tailored spaces and exceptional dining.*

Relaxed country house atmosphere

42 luxury rooms & suites plus six country cottages

500 acres of private parkland provides a space for clear thinking

Four beautiful meeting rooms

Complimentary high speed WiFi throughout the house

Michelin starred, flexible dining plus a casual Walled Garden Restaurant

Accessible location - London 1 hour by train or 2 hours by car

Close motorway links (M4, M5)

Award-winning spa with 20 metre pool and thermal cabins

Range of team outdoor pursuits and activities available

Private, secluded location

Equestrian centre, tennis courts, outdoor & indoor gym, 5-a-side pitch

Complimentary valet parking

Passionate events team to create your bespoke experience



